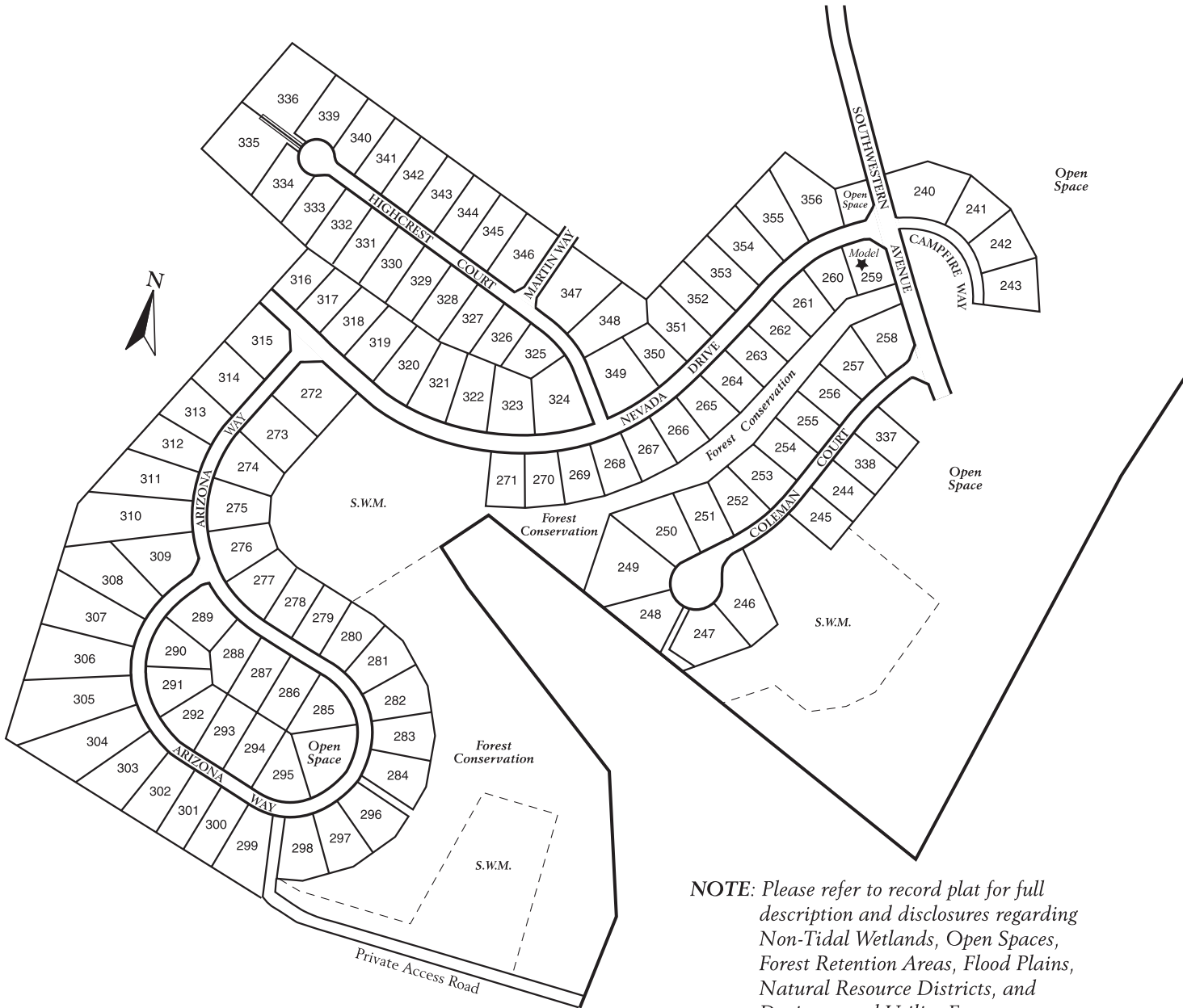


Manchester Farms



NOTE: Please refer to record plat for full description and disclosures regarding Non-Tidal Wetlands, Open Spaces, Forest Retention Areas, Flood Plains, Natural Resource Districts, and Drainage and Utility Easements.

Directions: Take 695 West to 795 North to Rt. 30 North, follow on Rt. 30 North 13.5 miles, make left on Charmil Drive to left on Southwestern Avenue to Model.



Comfort. Quality. Value.

NOTE: This plan is for illustrative purposes only. Exact location of houses, house types, property lines, parking and landscaping are subject to change without notice. See Sales representative for information regarding construction documents and final record plats.

bobward.com

