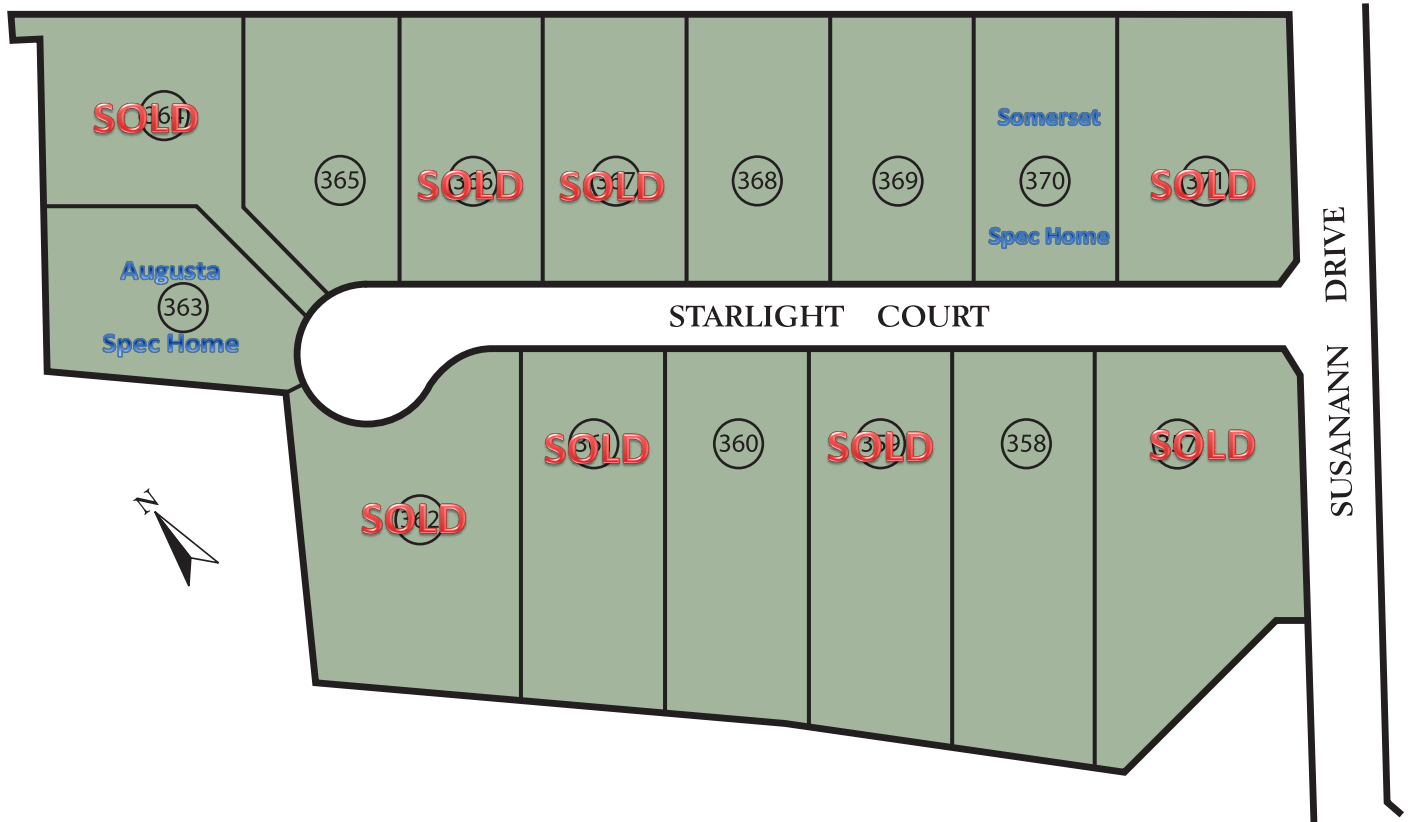


Manchester Farms



NOTE: Please refer to record plat for full description and disclosures regarding Non-Tidal Wetlands, Open Spaces, Forest Retention Areas, Flood Plains, Natural Resource Districts, and Drainage and Utility Easements.

NOTE: This plan is for illustrative purposes only. Exact location of houses, house types, property lines, parking and landscaping are subject to change without notice. See Sales representative for information regarding construction documents and final record plats.